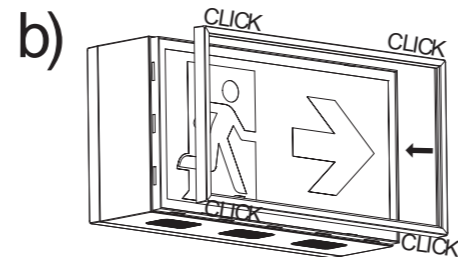
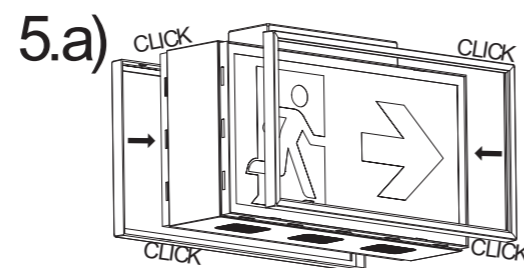
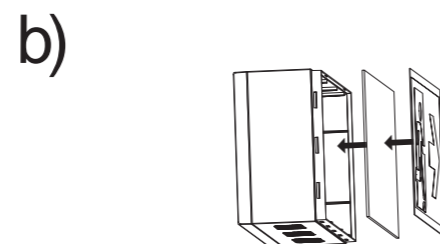
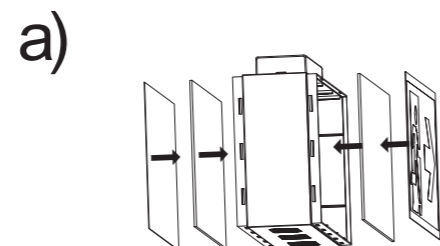
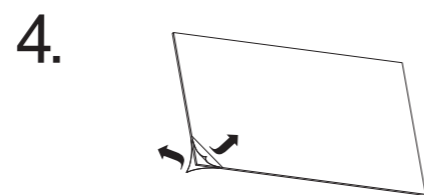
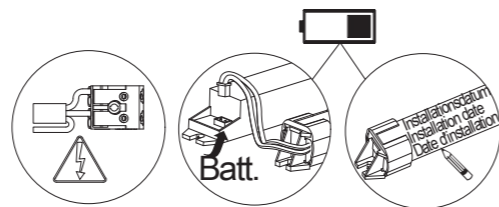
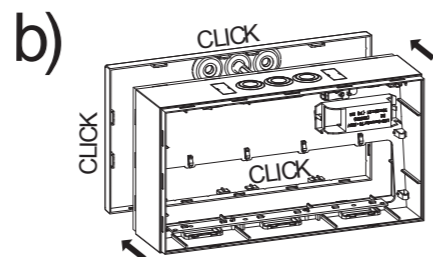
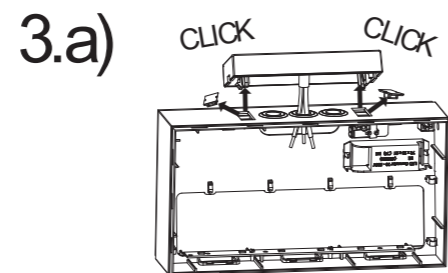
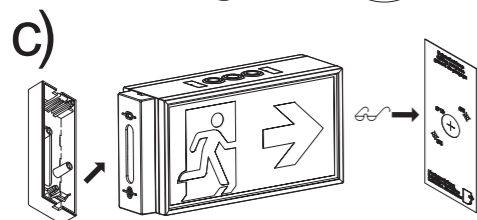
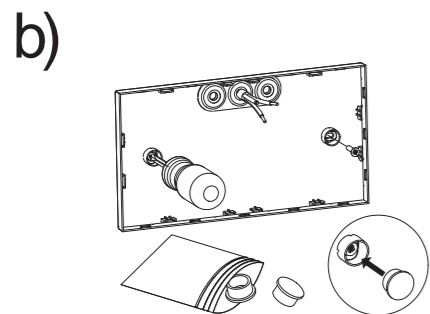
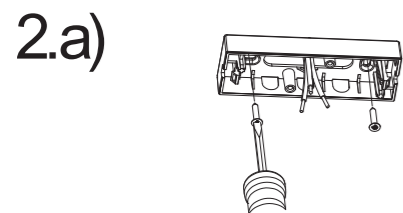
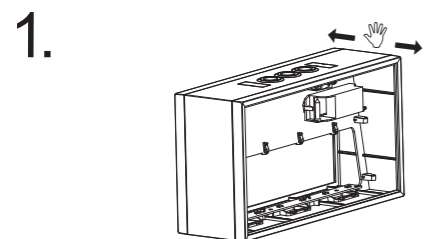
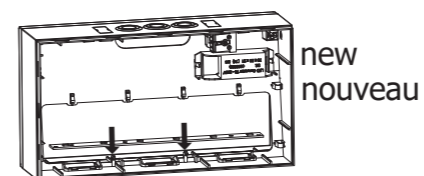
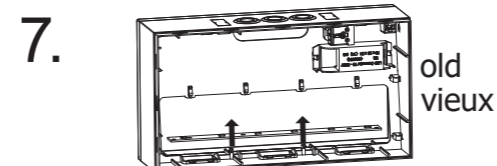


Art.-Nr./Item no./N° d'Art. 670603-V01

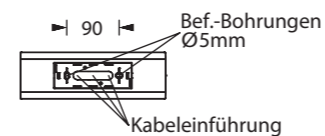
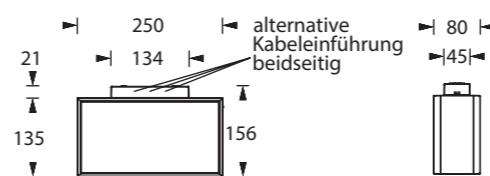


Leuchtmittelwechsel
Illuminant change
Agent lumineux variation

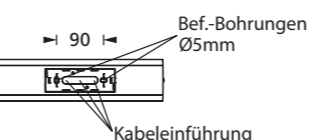
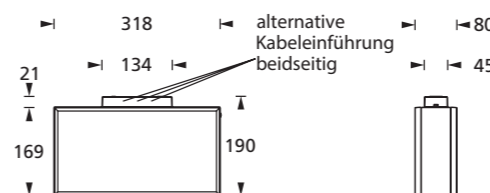


Maßzeichnungen
Dimensional drawings
Dessin à l'échelle

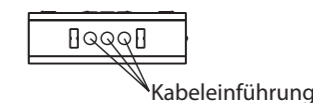
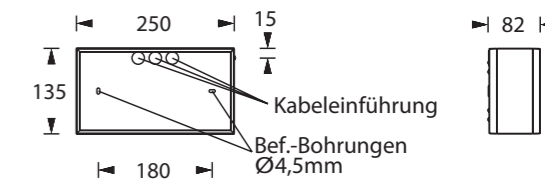
Deckenmontage / ceiling installation / montage au plafond
250 x 156 x 80 mm



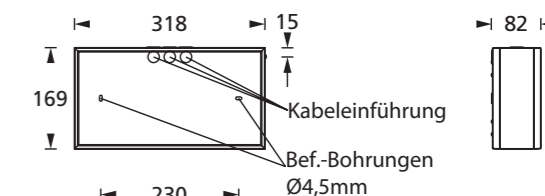
318 x 190 x 80 mm



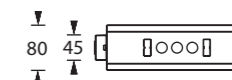
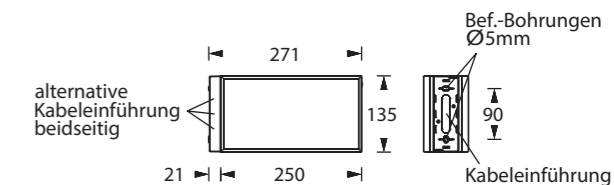
Wandmontage / wall installation / montage au mur
250 x 135 x 82 mm



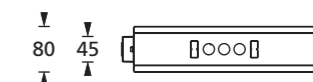
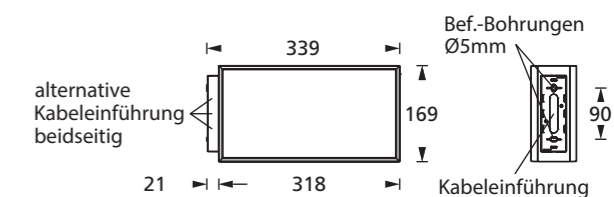
318 x 169 x 82 mm



Auslegermontage / wall bracket mounting / support mural
271 x 135 x 80 mm



339 x 169 x 80 mm



Kabeleinführung **Bef. Bohrungen**
Cable entry guide **Existing boreholes**
Introduction de câble **Perçages existants**
Alternative Kabeleinführung beidseitig
Alternative cable entry both sides
Entrée de câble alternatif sur les deux côtés

